

# EPO RED OXIDE PRIMER

Red Oxide Metal Primer



EPO RED OXIDE PRIMER

Ver 02/20

## DESCRIPTION

**EPO RED OXIDE PRIMER** is a one component formulated with special micronized red oxide professional quality primer with excellent adhesion and rust inhibiting properties that prevent the spread of corrosion.

## TYPICAL APPLICATIONS

- For use on steel structures

## ADVANTAGES

- Prevents the spread of corrosion
- Excellent adhesion
- Suitable for ferrous metal surfaces
- Suitable for use on both interior and exterior ferrous metal surfaces.

## PRODUCT DATA

<b>Form</b>	Liquid
<b>Colour</b>	Iron Oxide Red
<b>Density</b>	1.35 ± 0.1 g/cm <sup>3</sup>
<b>Packing</b>	4 and 18 KG
<b>Consumption</b>	10 to 13 m <sup>2</sup> /kg/coat, depending on the absorbency of the surface
<b>Layer Thickness</b>	Film thickness will be dependent on the coverage achieved. Wet: 75-100 microns. Dry: 50-70 microns.
<b>Shelf life</b>	12 months, in unopened package, dry and cool environments

## APPLICATION PROCEDURE

### SURFACE PREPARATION

Ensure surfaces are sound, dry and free from grease, wax and oil. Use a suitable oil and grease remover to clean the surface if necessary. Remove all loose or defective paint back to a firm edge. In the case of iron and steel, remove all loose scale and rust by thorough scraping and wire brushing. Leave new shiny galvanized metal to weather and become dull before priming with **EPO RED OXIDE PRIMER**.

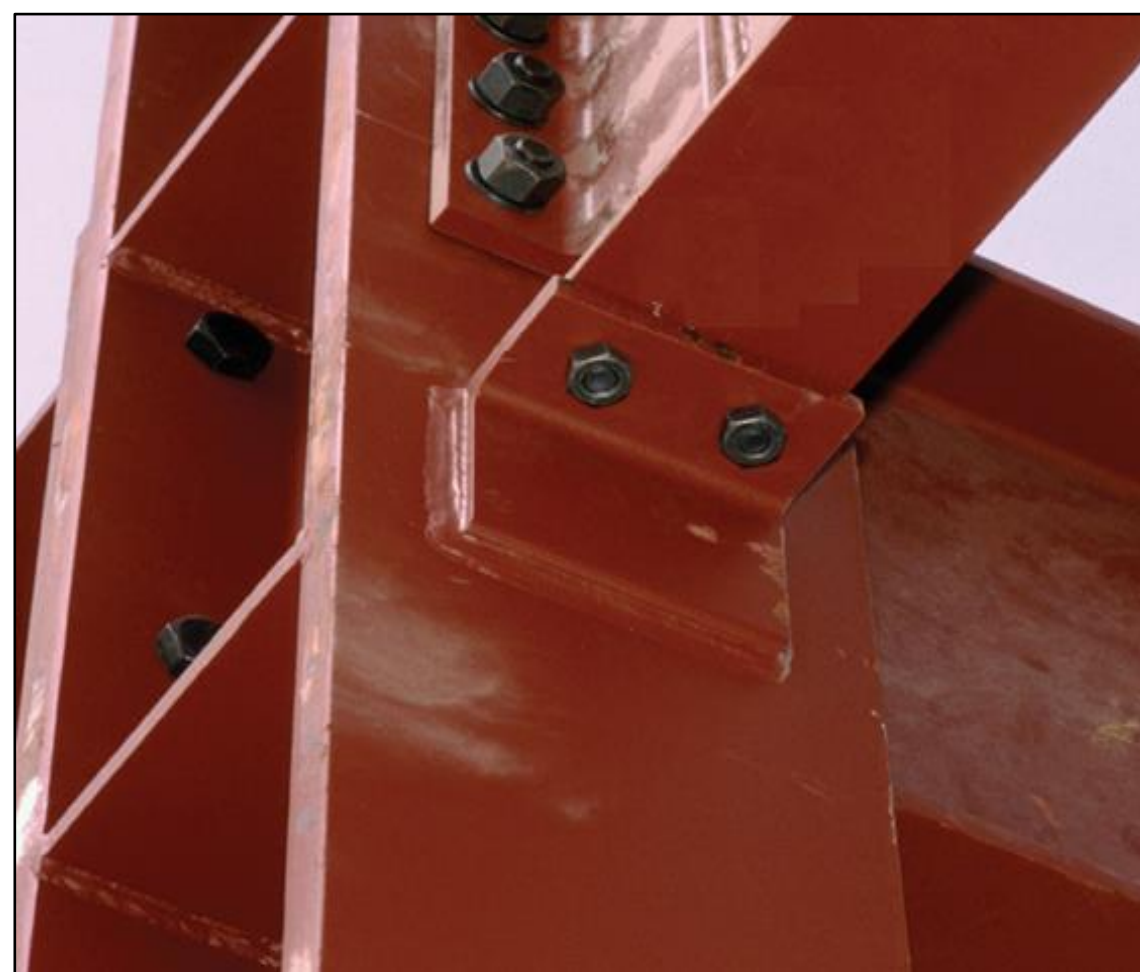
## APPLICATION

Use brush or roller, for Health and Safety reasons related to all solvent-based paints, spray application is not recommended. Single coat is usually sufficient; a second coat may be applied if required. Stir well before use.

## DRYING TIME

Drying times are generally related to air circulation, temperature, film thickness and number of coats, and will be affected correspondingly.

Substrate temperature	10°C	25°C	40°C
Surface dry	12 h	8 h	5 h
Through dry	48 h	24 h	15 h
Dry to recoat, minimum	18 h	14 h	10 h



## PRECAUTIONS

### CLEANING

After use, remove as much paint as possible from equipment before cleaning with white spirit.

### PROTECTION

**EPO RED OXIDE PRIMER** is flammable. Keep out of reach of children. Use only in well ventilated areas. Keep away from sources of ignition – no smoking. Avoid contact with skin and eyes. After contact with skin, wash immediately with plenty of soap and water or a proprietary skin cleanser. Do not use solvent or White Spirit.